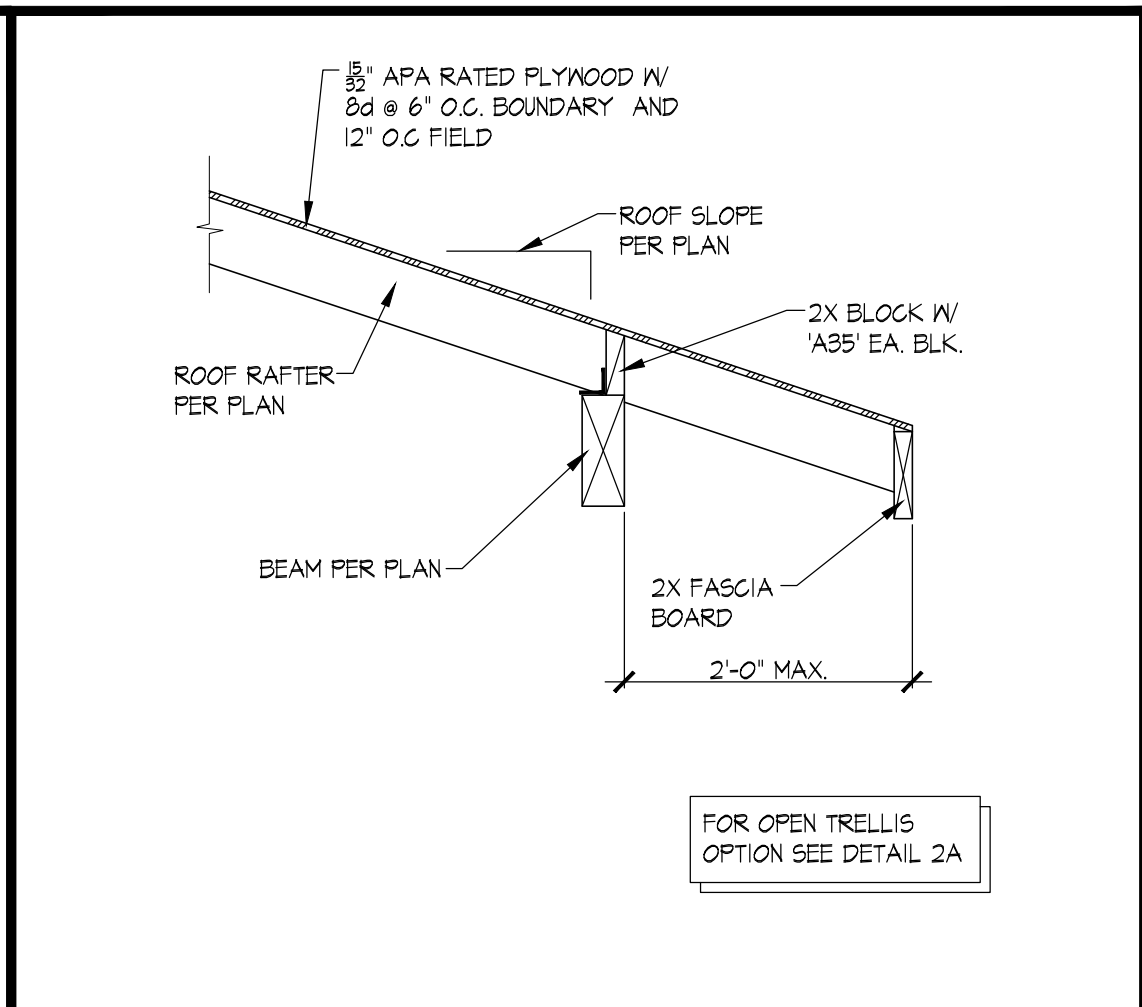
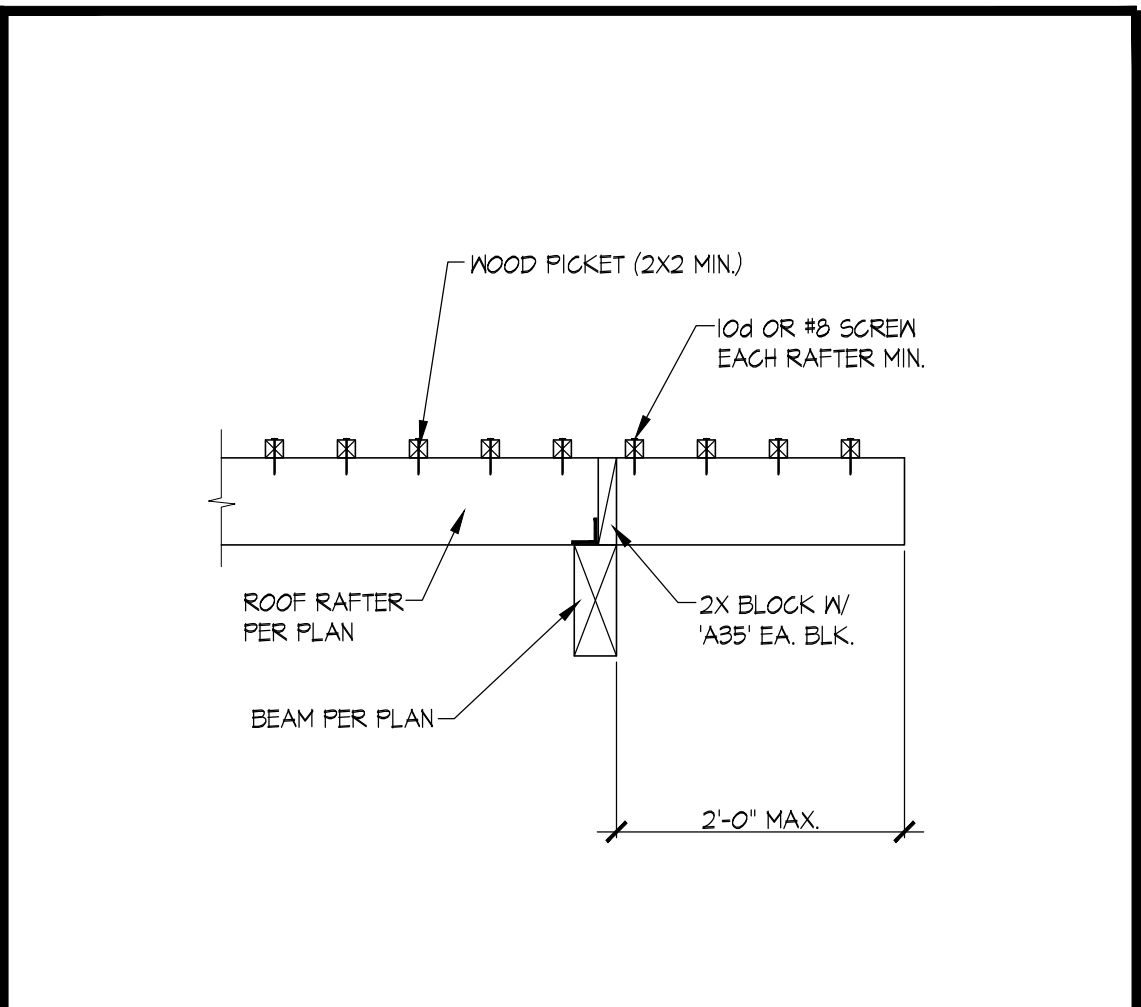


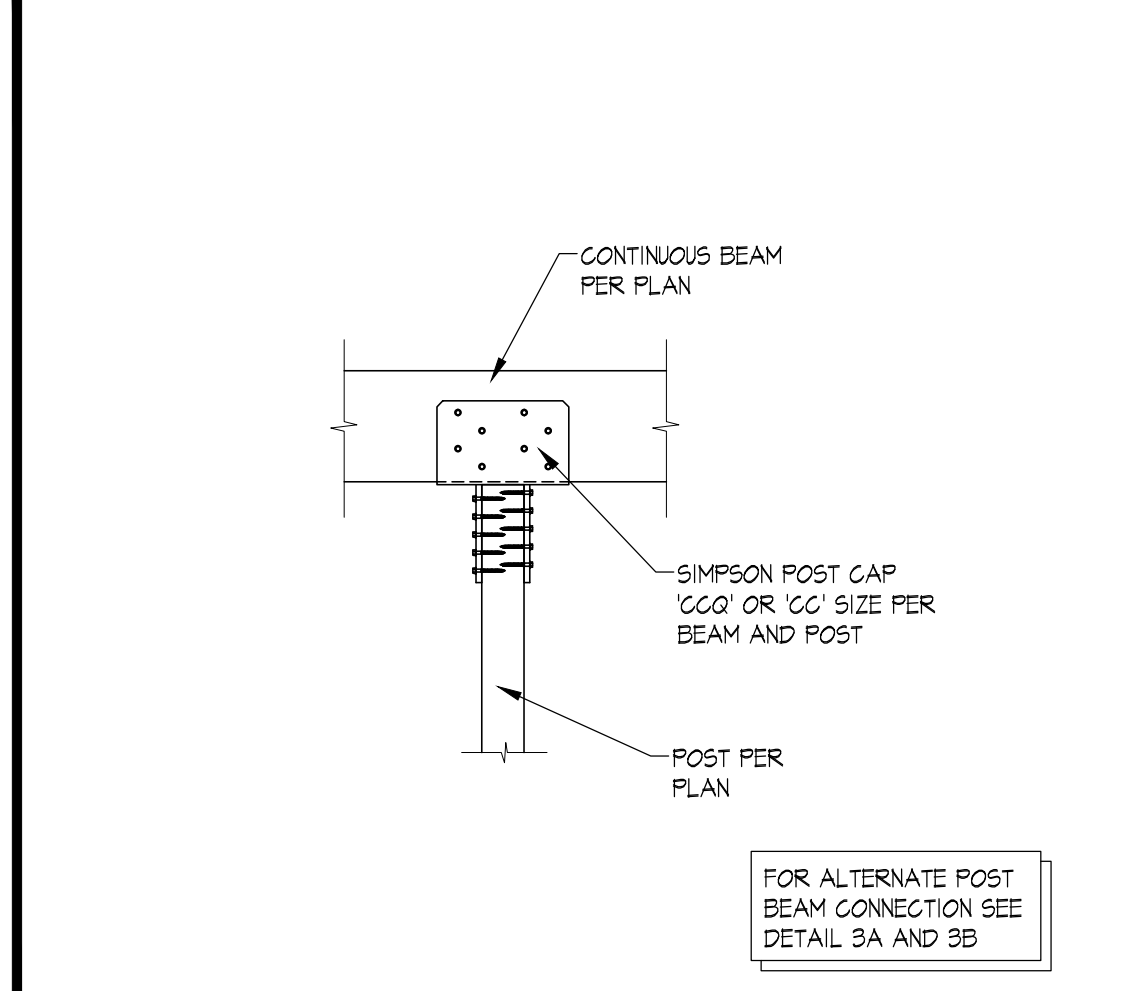
PAD FOOTING AT POST DETAIL SCALE: 1/2"=1'-0" 1



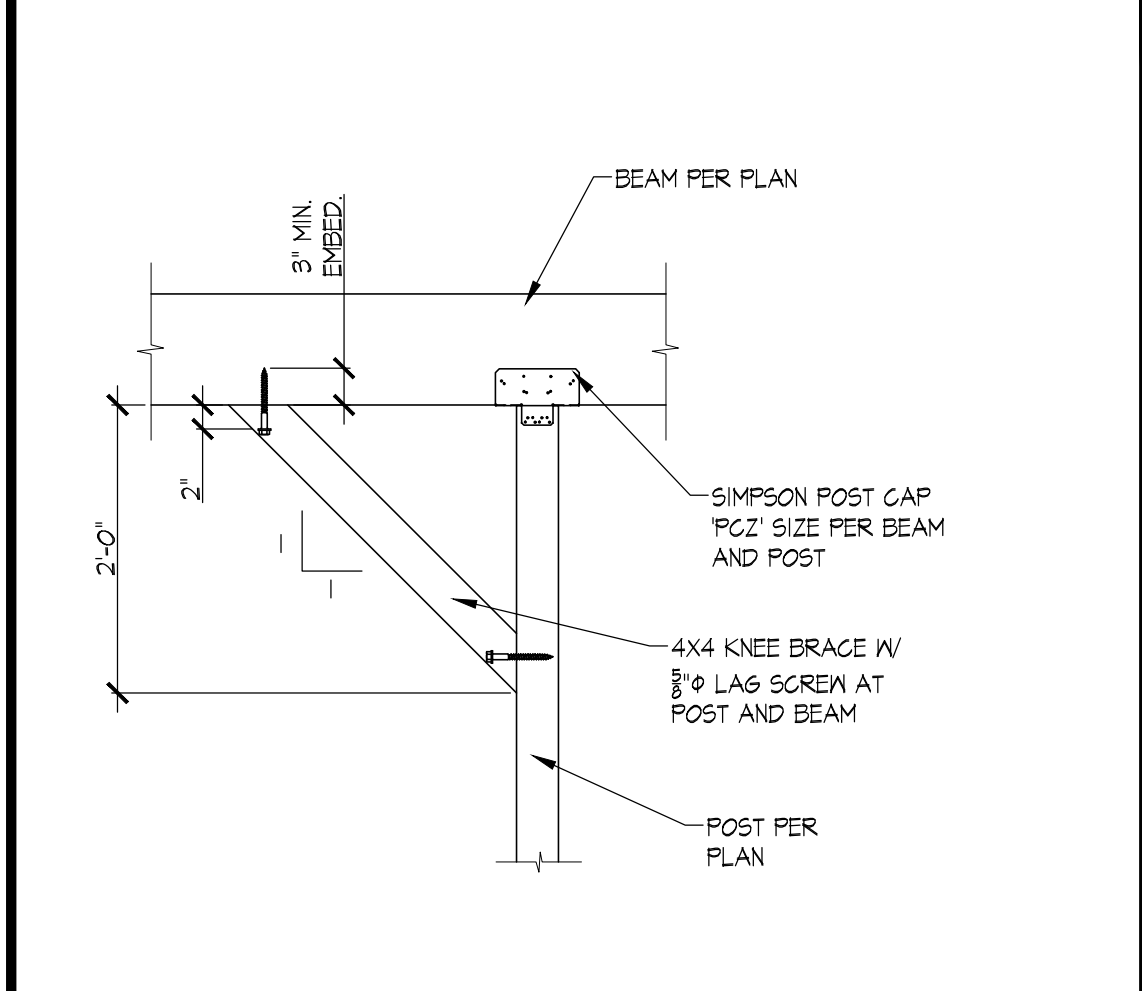
PATIO COVER EAVE AT BEAM SCALE: 1"=1'-0" 2



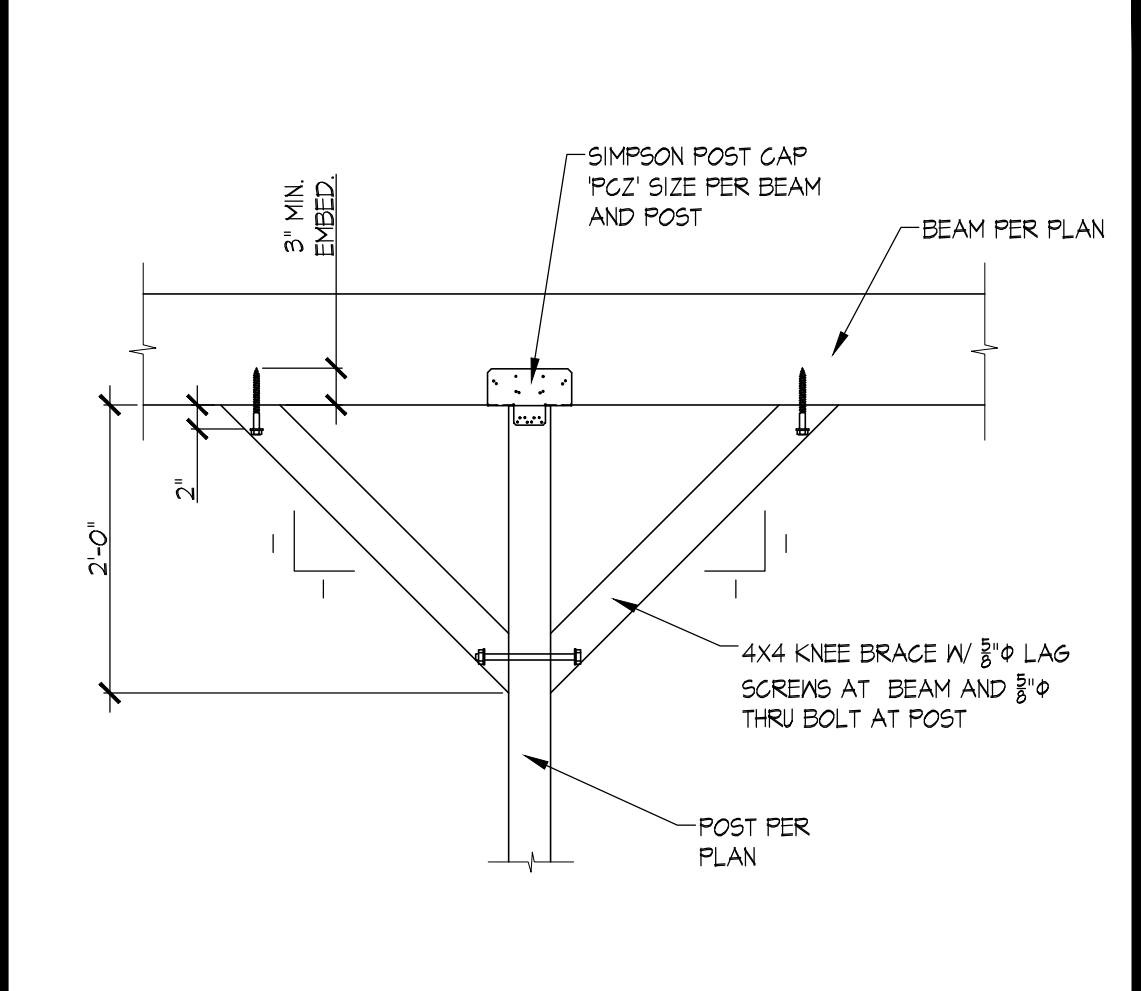
TRELLIS EAVE AT BEAM SCALE: 1"=1'-0" 2A



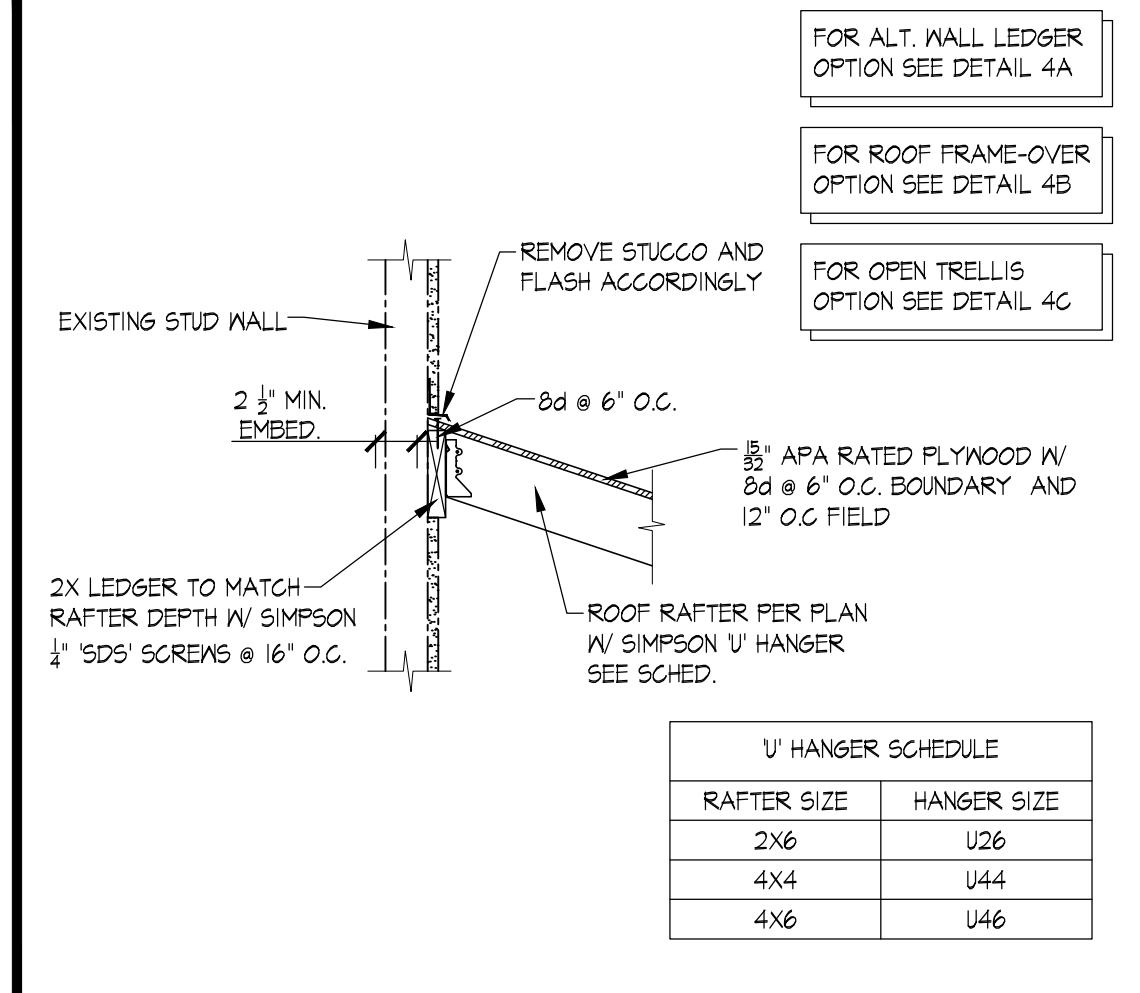
POST TO BEAM CONNECTION SCALE: 1"=1'-0" 3



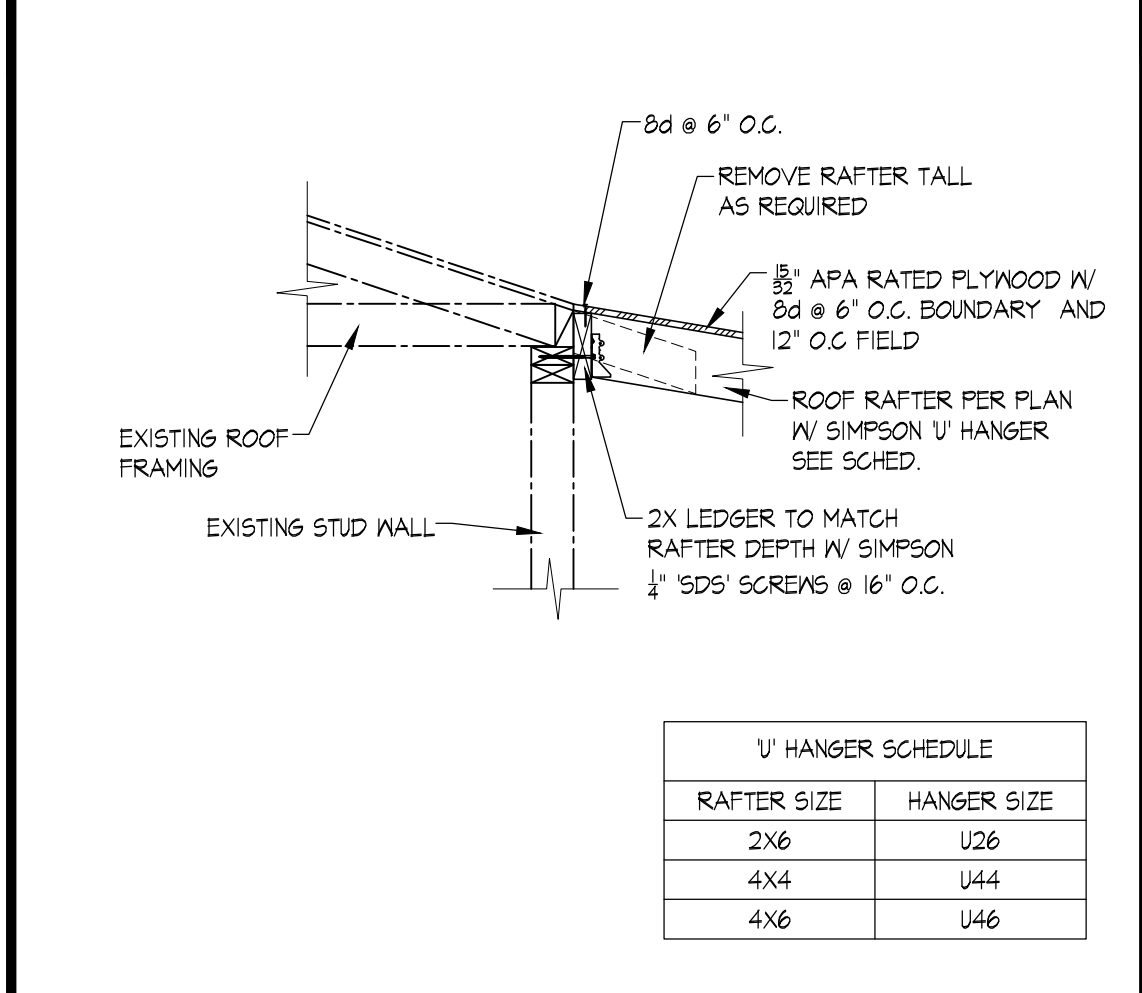
EDGE POST DETAIL SCALE: 1"=1'-0" 3A



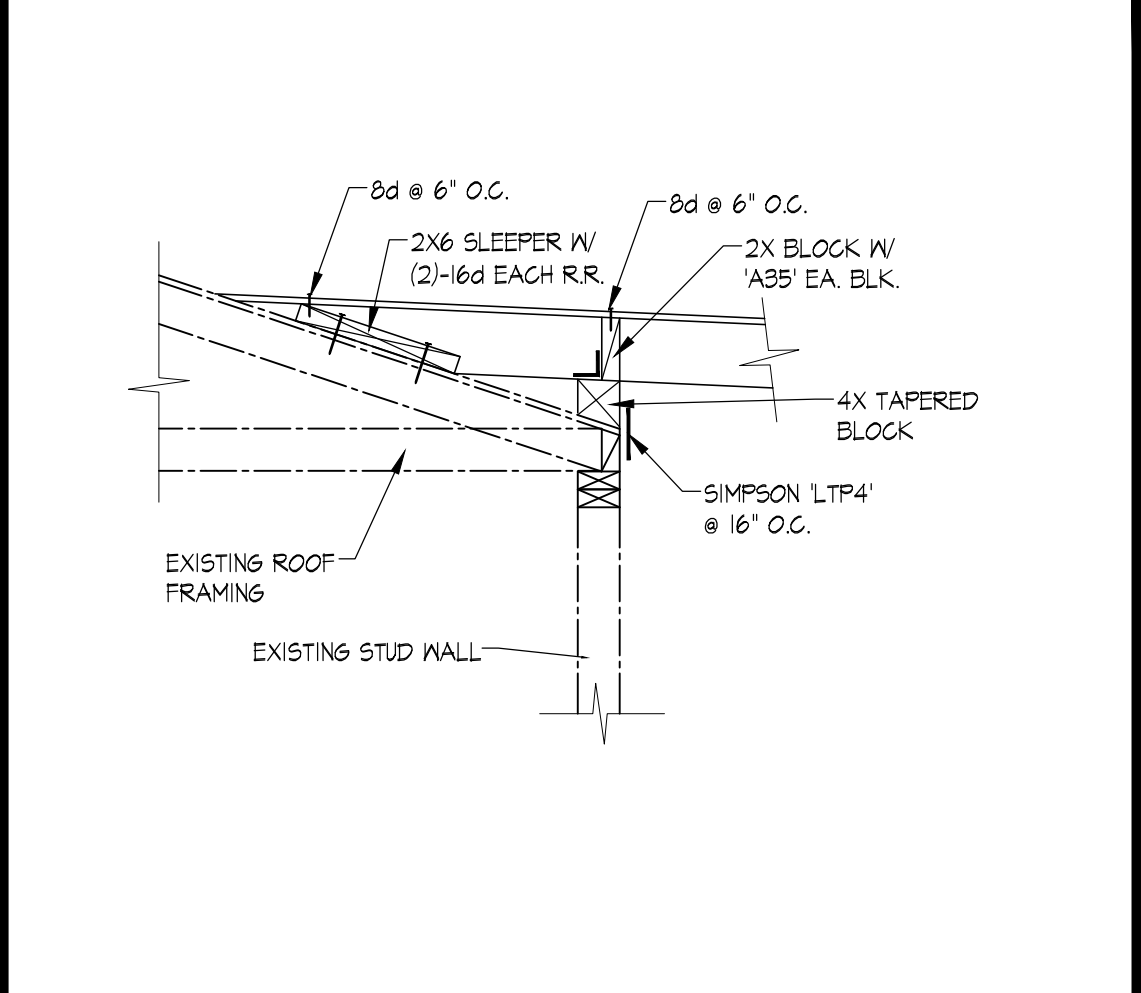
CENTER POST DETAIL SCALE: 1"=1'-0" 3B



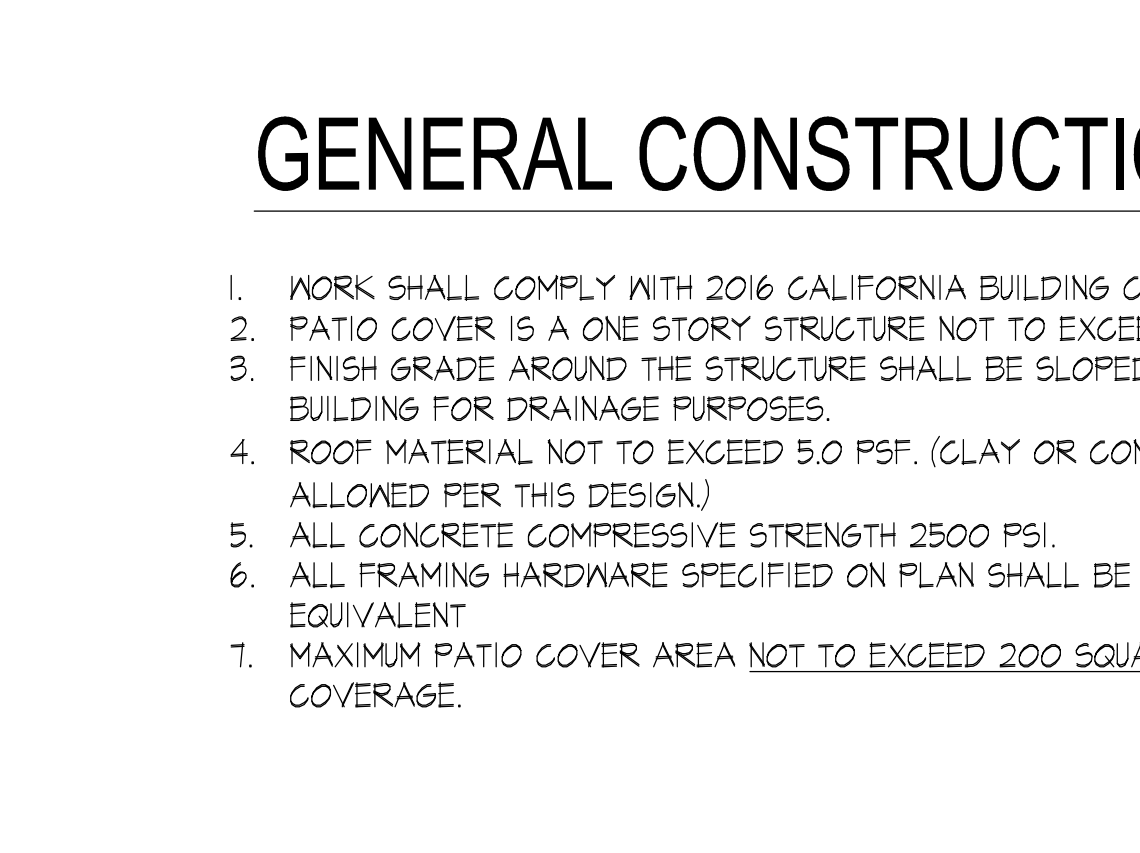
PATIO COVER WALL LEDGER SCALE: 1"=1'-0" 4



ALTERNATE WALL LEDGER DETAIL SCALE: 1"=1'-0" 4A



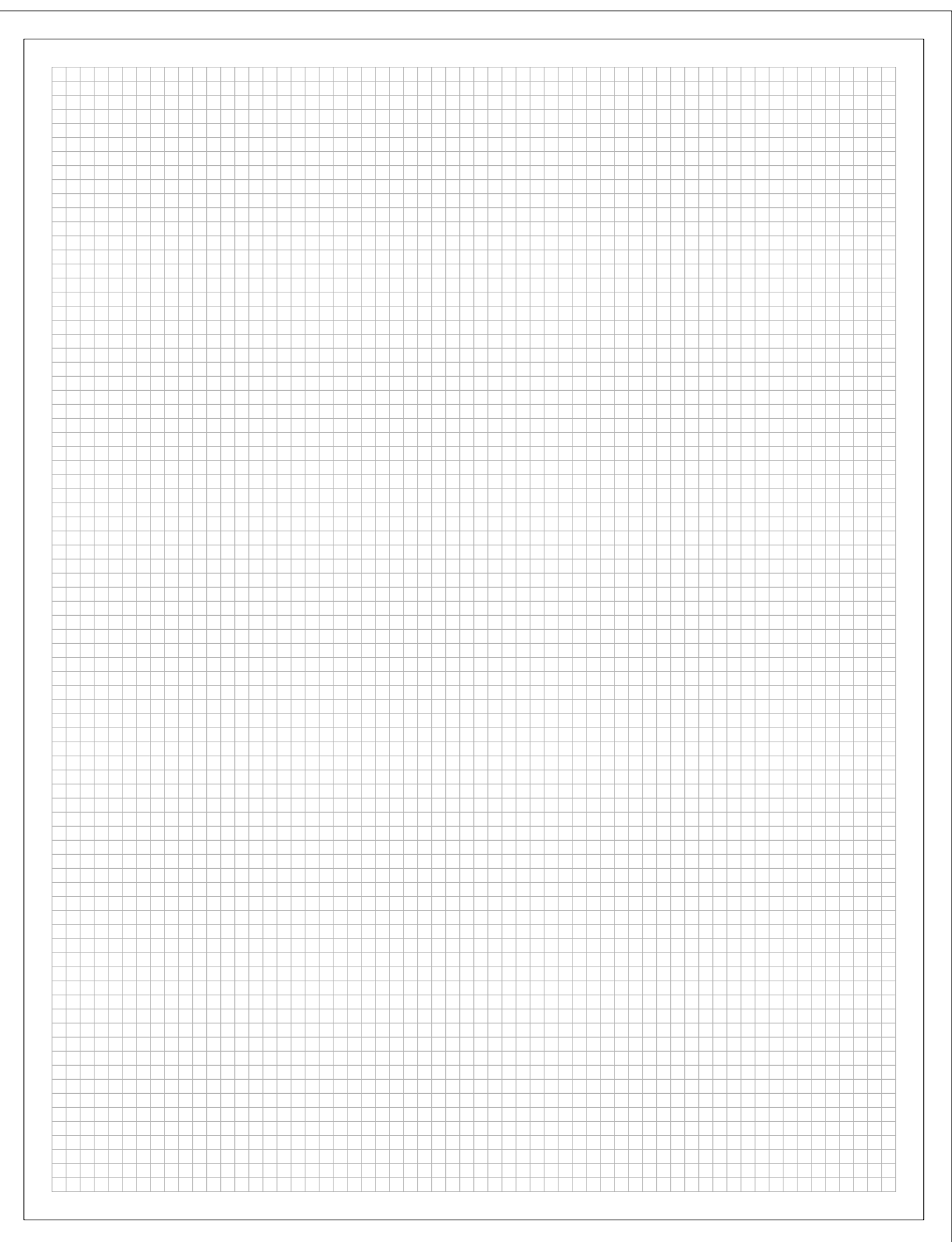
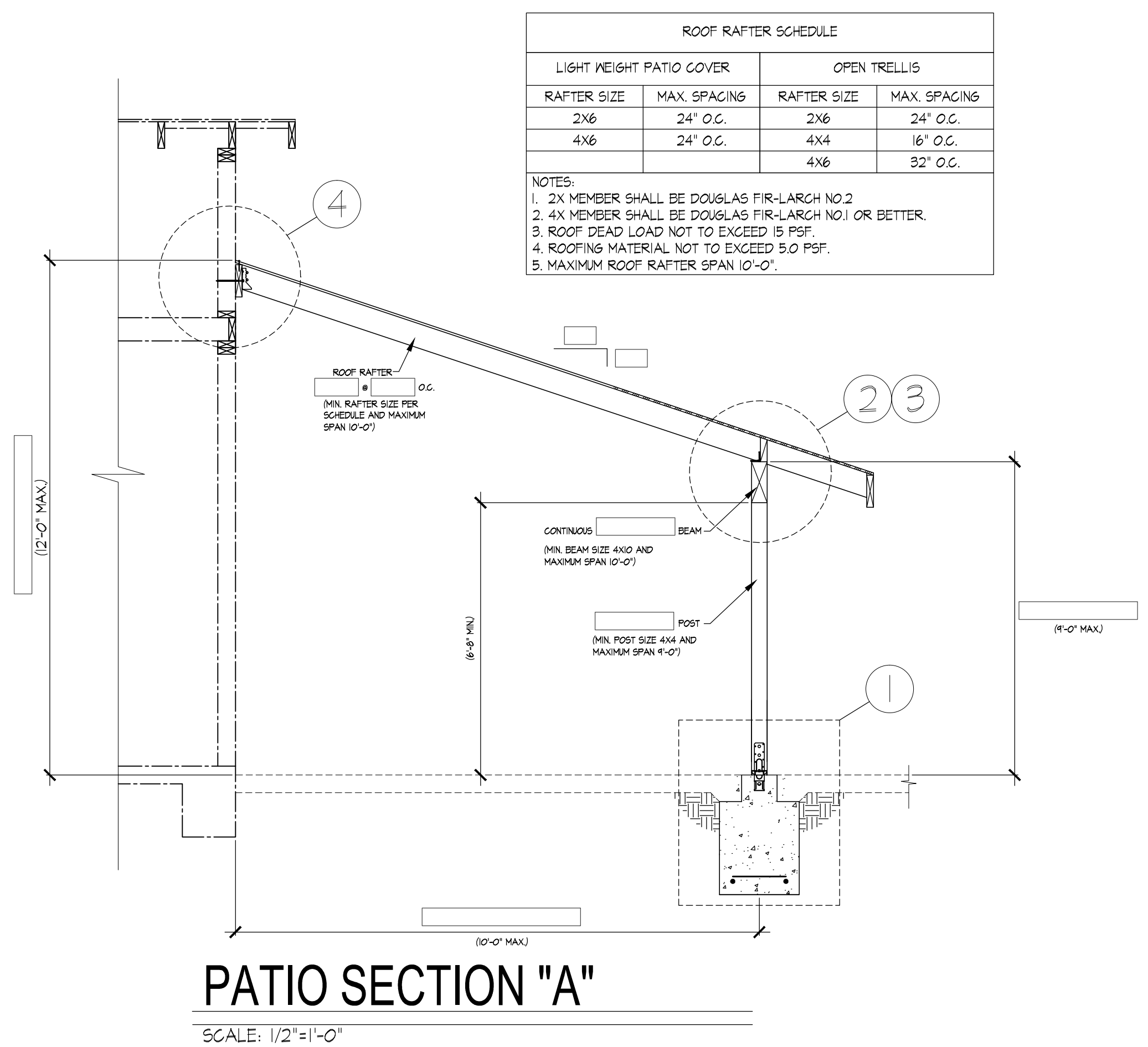
TRELLIS WALL LEDGER SCALE: 1"=1'-0" 4B



TRELLIS WALL LEDGER SCALE: 1"=1'-0" 4C

GENERAL CONSTRUCTION NOTES

1. WORK SHALL COMPLY WITH 2016 CALIFORNIA BUILDING CODE.
2. PATIO COVER IS A ONE STORY STRUCTURE NOT TO EXCEED 12'-0".
3. FINISH GRADE AROUND THE STRUCTURE SHALL BE SLOPED 2% AWAY FROM THE BUILDING FOR DRAINAGE PURPOSES.
4. ROOF MATERIAL NOT TO EXCEED 5.0 PSF. (CLAY OR CONCRETE TILE ROOF IS NOT ALLOWED PER THIS DESIGN.)
5. ALL CONCRETE COMPRESSIVE STRENGTH 2500 PSI.
6. ALL FRAMING HARDWARE SPECIFIED ON PLAN SHALL BE SIMPSON STRONG-TIE OR EQUIVALENT
7. MAXIMUM PATIO COVER AREA NOT TO EXCEED 200 SQUARE FEET INCLUDING EAVE COVERAGE.



SITE PLAN

SCALE:

PLAN CHECK #:
 PERMIT #:
 ADDRESS:

2016 CALIFORNIA BUILDING CODE
**STANDARD PATIO
 COVER SHEET**

CITY OF
VENTURA
 BUILDING & SAFETY
 www.cityofventura.net

REV: 2/2017