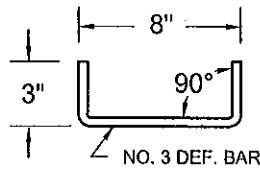
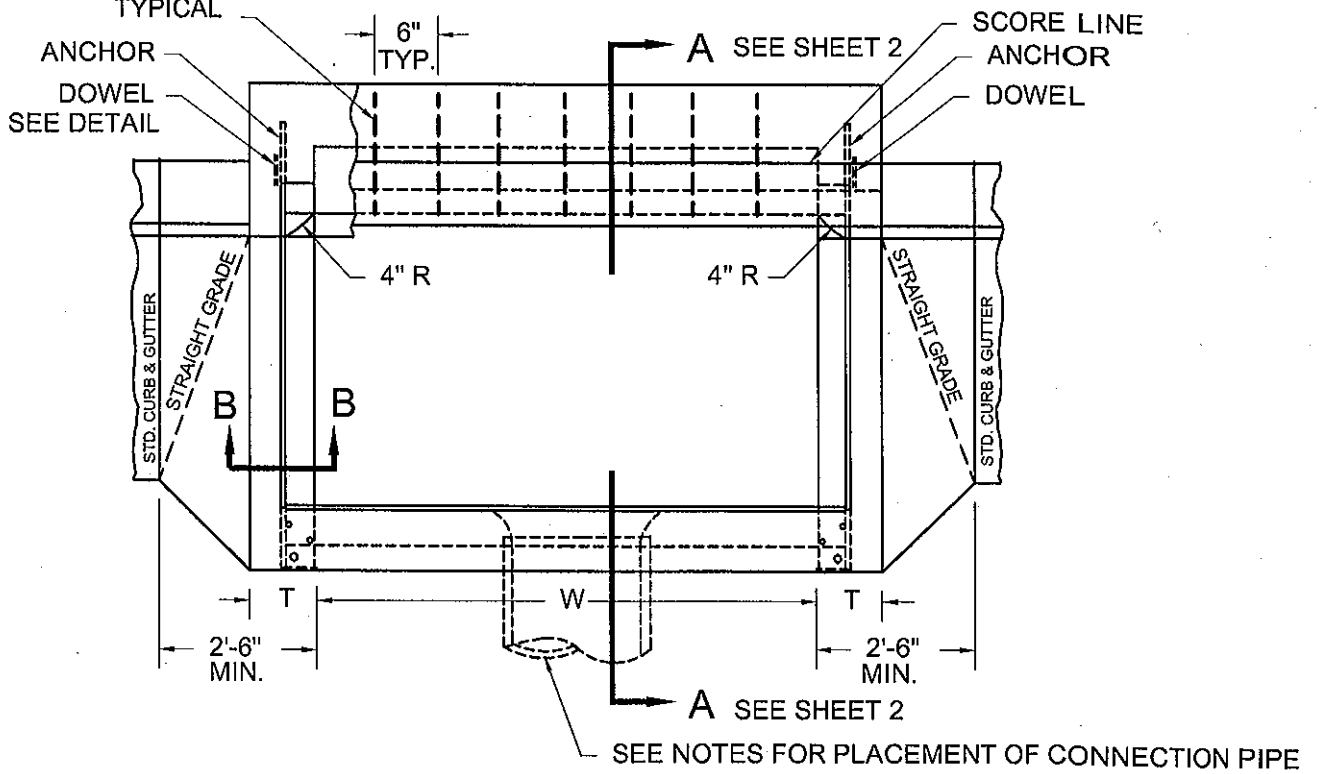
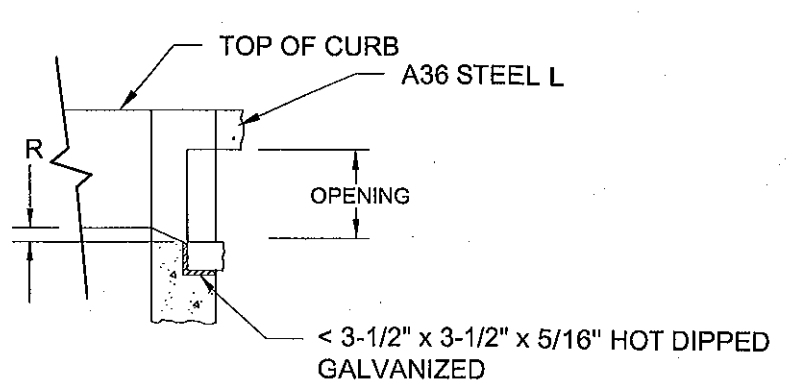


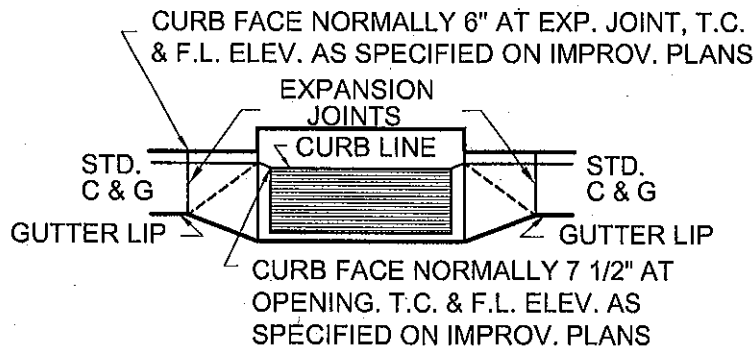
NO. 4 DEFORMED BARS
TYPICAL



DOWEL DETAIL



SECTION B - B
END WALL



CITY OF SAN BUENAVENTURA

PUBLIC WORKS DEPARTMENT
ENGINEERING DIVISION

CATCH BASIN - TYPE 1

STD. DET. NO.

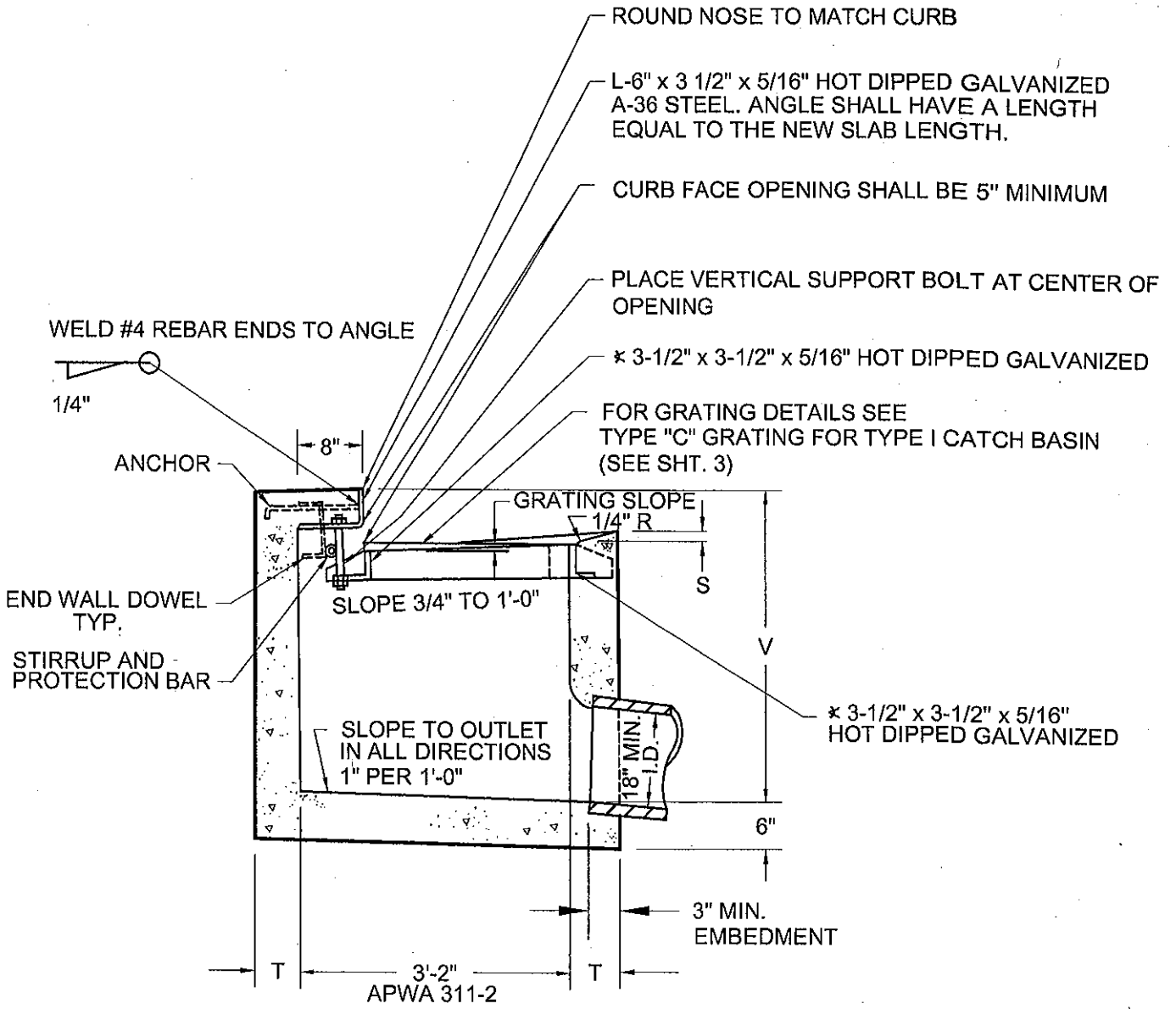
301

APPROVED BY: J. McDermott
PRINCIPAL CIVIL ENGINEER

APPROVED BY: R. R. O.
CITY ENGINEER R.C.E. 37064

DATE 4-8-14

SHEET
1 of 4



SECTION A - A

SEE SHEET 1

CITY OF SAN BUENAVENTURA

PUBLIC WORKS DEPARTMENT
ENGINEERING DIVISION

CATCH BASIN - TYPE 1

STD. DET. NO.

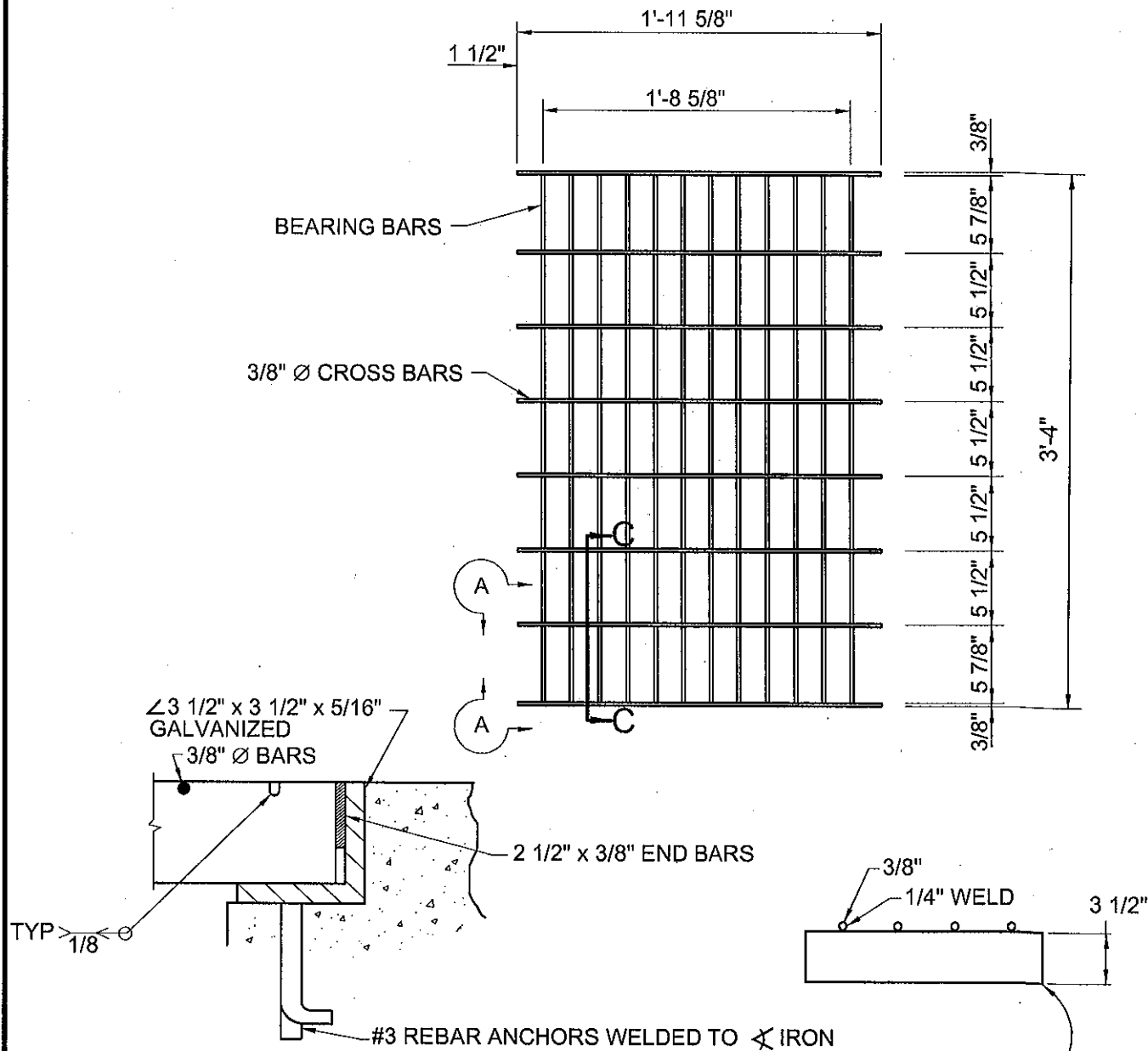
301

APPROVED BY: J. H. Dewitt
PRINCIPAL CIVIL ENGINEER

APPROVED BY: R. G. R.
CITY ENGINEER R.C.E. 37064

DATE 4-8-14

SHEET
2 of 4



SECTION C - C

BARS ARE NOT FLUSH

NOTE:

1. BEARING BARS TO BE 4" x 3/8" BARS ON 1 7/8" CENTERS.
2. 12 BARS FOR 24" GRATE, TYPE 24 GRATE SHOWN.
3. WEIGHT OF 24" GRATE = 192 LBS.
4. 3/8" CROSS BARS MAY BE FILLET WELDED, ELECTROFORGED, OR RESISTANCE WELDED TO BEARING BARS.
5. GRATE TO BE A36 STEEL GALVANIZED AFTER WELDING. IN ACCORDANCE WITH ASTM A123.
6. GREEN BOOK DETAIL MAY BE USED AS APPROVED BY CITY ENGINEER.

CITY OF SAN BUENAVENTURA

PUBLIC WORKS DEPARTMENT
ENGINEERING DIVISION

TYPE 'C' GRATE FOR CATCH BASIN - TYPE 1

STD. DET. NO.

301

APPROVED BY: *J. McDermott*
PRINCIPAL CIVIL ENGINEER

APPROVED BY: *R. R. R.*
CITY ENGINEER R.C.E. 37064

DATE *4-8-10*

SHEET
3 of 4

NOTES FOR CATCH BASIN - TYPE 1

- 1 ANCHORS SHALL BE 3 FEET 5 3/8" INCHES, CENTER TO CENTER.
- 2 BASIN SHALL HAVE ONE GRATING UNLESS OTHERWISE SPECIFIED ON IMPROVEMENT PLANS FOR BASIN REQUIRING MORE THAN ONE GRATE, CONSTRUCT PER 303-3 AND 304-3 OF THE STANDARD PLANS FOR PUBLIC WORKS CONSTRUCTION.
- 3 CONCRETE SHALL BE 560-C-3250.
- 4 CONNECTION PIPES MAY BE PLACED IN ANY POSITION AROUND THE WALLS PROVIDED THEY POINT IN THE PROPER DIRECTION AND THE POSITION IS OTHERWISE CONSISTENT WITH THE IMPROVEMENT PLAN.
- 5 CURVATURE OF THE END-WALLS AT CURB OPENING SHALL BE FORMED BY CURVED FORMS AND SHALL NOT BE MADE BY PLASTERING.
- 6 DIM: GRATING SLOPE SHALL BE PARALLEL TO PLANE OF GUTTER -
 SLOPE 3/4" TO 1'-0".
 R = 3/4 INCH.
 S = 1 1/2 INCHES.
 T = 6 INCHES IF V IS 4 FEET OR LESS.
 T = 8 INCHES IF V IS BETWEEN 4 FEET AND 8 FEET.
 T = 10 INCHES IF V IS 8 FEET OR MORE.
 V = 3 FEET 6 INCHES, UNLESS OTHERWISE SPECIFIED ON IMPROVEMENT PLANS.
 W = 2 FEET 11 3/8 INCHES FOR ONE GRATING. ADD 3 FEET 5 3/8 INCHES FOR EACH ADDITIONAL GRATING.
- 7 EXPOSED SURFACES OF THE CATCH BASIN SHALL CONFORM IN SLOPE, GRADE, COLOR, FINISH AND SCORING TO EXISTING IMPROVEMENTS ADJACENT TO THE BASIN. WHERE NO SIDEWALK EXISTS, THE TOP SHALL BE FINISHED TO CONFORM TO STANDARD SIDEWALK SLOPE AND FINISH. WHERE NO CURB EXISTS, THE BATTER OF EXPOSED END WALLS ABOVE THE STREET SURFACE SHALL CONFORM TO BATTER FOR STANDARD CURB.
- 8 FLOOR OF BASIN SHALL BE GIVEN A STEEL-TROWELLED FINISH.
- 9 OUTLET PIPE SHALL BE TRIMMED TO THE FINAL SHAPE AND LENGTH BEFORE CONCRETE IS POURED.
- 10 REINFORCING STEEL SHALL BE NO. 4 DEFORMED BARS. CLEARANCE SHALL BE ONE INCH FROM TOP OF SLAB.
- 11 SLOPE OF FLOOR SHALL BE 1 IN 12 MINIMUM TO THE OUTLET FROM ALL DIRECTIONS.
- 12 APPLY "NO DUMPING - DRAINS TO OCEAN" PLACARD WITH MANUFACTURER'S ADHESIVE OR APPROVED EQUAL AS DESIGNATED BY PUBLIC WORKS/ENVIRONMENTAL SUSTAINABILITY.

CITY OF SAN BUENAVENTURA

PUBLIC WORKS DEPARTMENT
ENGINEERING DIVISION

NOTES FOR CATCH BASIN - TYPE 1

STD. DET. NO.

301

APPROVED BY: J. McDevitt
PRINCIPAL CIVIL ENGINEER

APPROVED BY: R. R. O.
CITY ENGINEER R.C.E. 37064

DATE 4-8-14

SHEET
4 of 4