

LEGEND

- ① 4" MIN. SERVICE TEE CONNECTION FOR LINE.
- ② GATE VALVE (RW).
- ③ 4" MIN. DUCTILE IRON PIPE OR PVC. PIPELINE PROTECTIVE COATING PER DETAIL 001.
- ④ MJ RETAINER GLANDS SHALL BE MEGALUG.
- ⑤ DUCTILE IRON 90° MJ x MJ.
- ⑥ FLANGED X PLAIN END DUCTILE IRON SPOOL (4"MIN).
- ⑦ DOUBLE DETECTOR CHECK VALVE ASSEMBLY WITH O.S. & Y. VALVES.
- ⑧ GALVANIZED PIPE SUPPORT (DETAIL ON SHEET 2).
- ⑨ VALVE BOX PER STANDARD DETAIL 004.
- ⑩ 3/4" BYPASS METER WITH DOUBLE CHECK VALVE ASSEMBLY AND SHUT OFF VALVE ASSEMBLY FOR METER. (SEE NOTES 8 & 9 ON SHEET 3)
- ⑪ FOR 2-1/2" AND 3" FIRE SERVICE ONLY. THIS WILL BE A REDUCING FLANGED CAST IRON ELL.
- ⑫ 6" x 12" x 12" BASE, 560-C-3250 CONCRETE.
- ⑬ THRUST BLOCKS PER STANDARD DETAIL 006.
- ⑭ LOCATING WIRE FOR PVC.

CITY OF SAN BUENAVENTURA

PUBLIC WORKS DEPARTMENT
ENGINEERING DIVISION

2-1/2" AND LARGER FIRE LINE DOUBLE DETECTOR CHECK

STD. DET. NO

021

APPROVED BY:

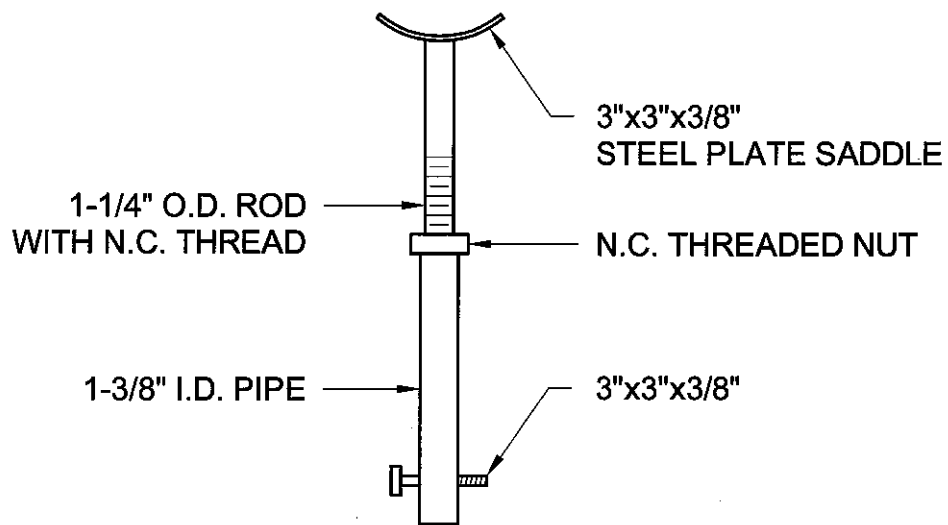
[Signature]
WATER GENERAL MANAGER

APPROVED BY:

[Signature]
CITY ENGINEER R.C.E. 37064

DATE **7-7-16**

SHEET
1 of 3



PIPE SUPPORT DETAIL
NO SCALE

CITY OF SAN BUENAVENTURA

PUBLIC WORKS DEPARTMENT
ENGINEERING DIVISION

2-1/2" AND LARGER FIRE LINE DOUBLE DETECTOR CHECK

STD. DET. NO.

021

APPROVED BY:

[Signature]
WATER GENERAL MANAGER

APPROVED BY:

[Signature]
CITY ENGINEER R.C.E. 37064

DATE *7-7-16*

SHEET
2 of 3

GENERAL NOTES

1. SEE CITY STANDARD DETAIL 001 - GENERAL WATER NOTES.
2. ALL MATERIAL TO BE APPROVED BY CITY ENGINEER.
3. ABOVE GROUND INSTALLATION SHALL BE PAINTED BY CONTRACTOR WITH ONE COAT OF RED OXIDE PRIMER AND TWO FINISH COATS OF HUNTER GREEN EXTERIOR ENAMEL.
4. ALL BACKFLOW DEVICES SHALL BE THOSE DEVICES AS APPROVED BY THE COUNTY OF VENTURA, ENVIRONMENTAL HEALTH DIVISION.
5. PRIVATE FIRE HYDRANTS REQUIRE DOUBLE CHECK VALVE ASSEMBLY.
6. FIRE SERVICE LATERAL AND CONNECTION TO WATER MAIN WITHIN CITY RIGHT OF WAY SHALL BE PER CITY STANDARDS.
7. WHEN INSTALLED IN LOCATIONS SUBJECT TO DAMAGE FROM VEHICLES, 4"Ø CONCRETE FILLED BOLLARDS SHALL BE INSTALLED AS DIRECTED BY CITY ENGINEER. (SEE STANDARD DETAIL 022)
8. CHECK VALVES SHALL MEET ALL STANDARDS AS ESTABLISHED BY THE COUNTY OF VENTURA, DEPARTMENT OF ENVIRONMENT HEALTH.
9. THE 3/4" BYPASS METER SHALL BE A SENSUS SR2 TYPE WITH ALL BRONZE CASE OR APPROVED EQUAL. THE METER IS TO REGISTER IN CUBIC FEET. METER TO BE TAMPER PROOF.
10. THE 3/4" BYPASS CHECK VALVE SHALL BE A SPRING LOADED TYPE CHECK VALVE.
 - A) THE BODY SHALL BE ALL BRONZE.
 - B) INTERNAL PARTS SHALL BE OF 304 OR 316 STAINLESS STEEL.
 - C) THE 3/4" SHUT OFF VALVE SHALL BE A BALL TYPE VALVE.
11. THE MAIN LINE CHECK VALVES AND 3/4" BYPASS CHECK VALVES SHALL BE WATER TESTED ACROSS THE VALVES AT 150% OF THE NORMAL OPERATING PRESSURE, FOR ZERO LOSS ACROSS THE CHECK VALVES, BY A CERTIFIED TESTER. INFORMATION TO BE FORWARDED TO THE CITY WATER DIVISION AND TO THE VENTURA COUNTY ENVIRONMENTAL HEALTH DEPARTMENT, PRIOR TO ACCEPTANCE.
12. ON-SITE PLUMBING MATERIAL SHALL MEET DOMESTIC WATER STANDARD REQUIREMENTS AND BE FREE OF BACTERIA.
13. THE FIRE DEPARTMENT CONNECTION (FDC) SHALL BE INSTALLED AND PAINTED PER DETAIL 020, NOTE 5 IN A LOCATION APPROVED BY THE FIRE CHIEF.

CITY OF SAN BUENAVENTURA

PUBLIC WORKS DEPARTMENT
ENGINEERING DIVISION

2-1/2" AND LARGER FIRE LINE DOUBLE DETECTOR CHECK

STD. DET. NO.

021

APPROVED BY


WATER GENERAL MANAGER

APPROVED BY


CITY ENGINEER R.C.E. 37064

DATE

7-7-16

SHEET
3 of 3